

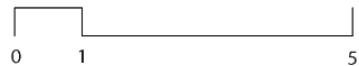
VILA NOVA

CASA RE (2023)
Campina Grande, Paraíba, Brasil



- 1. GARAGEM
- 2. LIVING
- 3. HALL
- 4. DORMITÓRIO
- 5. BWC
- 6. JANTAR
- 7. ESTAR
- 8. COZINHA
- 9. SERVIÇO
- 10. DESPENSA
- 11. CORADOURO
- 12. GOURMET
- 13. LAVABO
- 14. SUÍTE
- 15. CLOSET
- 16. VARANDA

PLANTA BAIXA TÉRREO



A

B

C D

C D

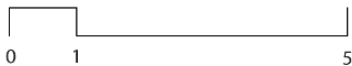
A

B



- | | |
|---------------|---------------|
| 1. GARAGEM | 9. SERVIÇO |
| 2. LIVING | 10. DESPENSA |
| 3. HALL | 11. CORADOURO |
| 4. DORMITÓRIO | 12. GOURMET |
| 5. BWC | 13. LAVABO |
| 6. JANTAR | 14. SUÍTE |
| 7. ESTAR | 15. CLOSET |
| 8. COZINHA | 16. VARANDA |

PLANTA BAIXA 1º PAVIMENTO



A

B

C

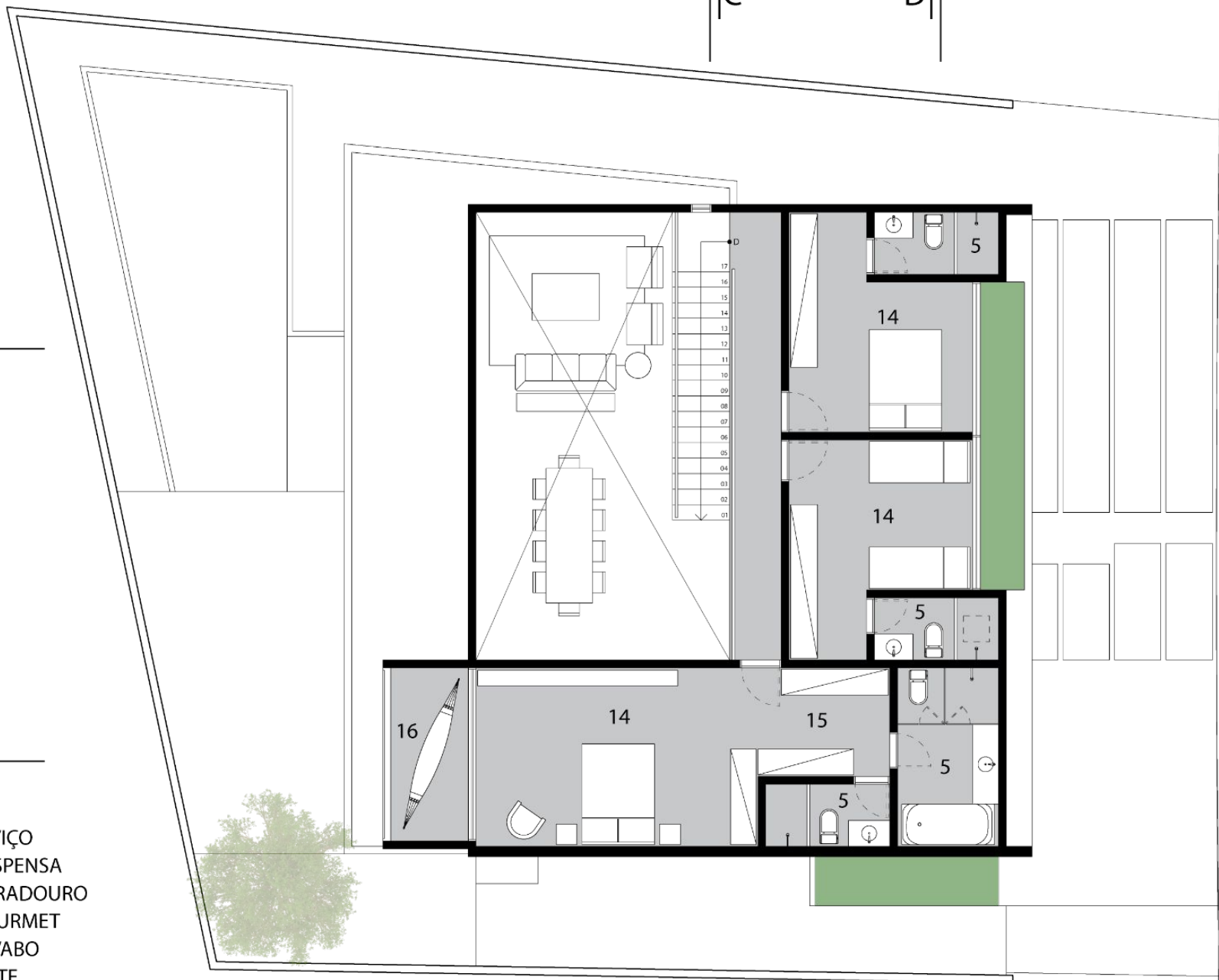
D

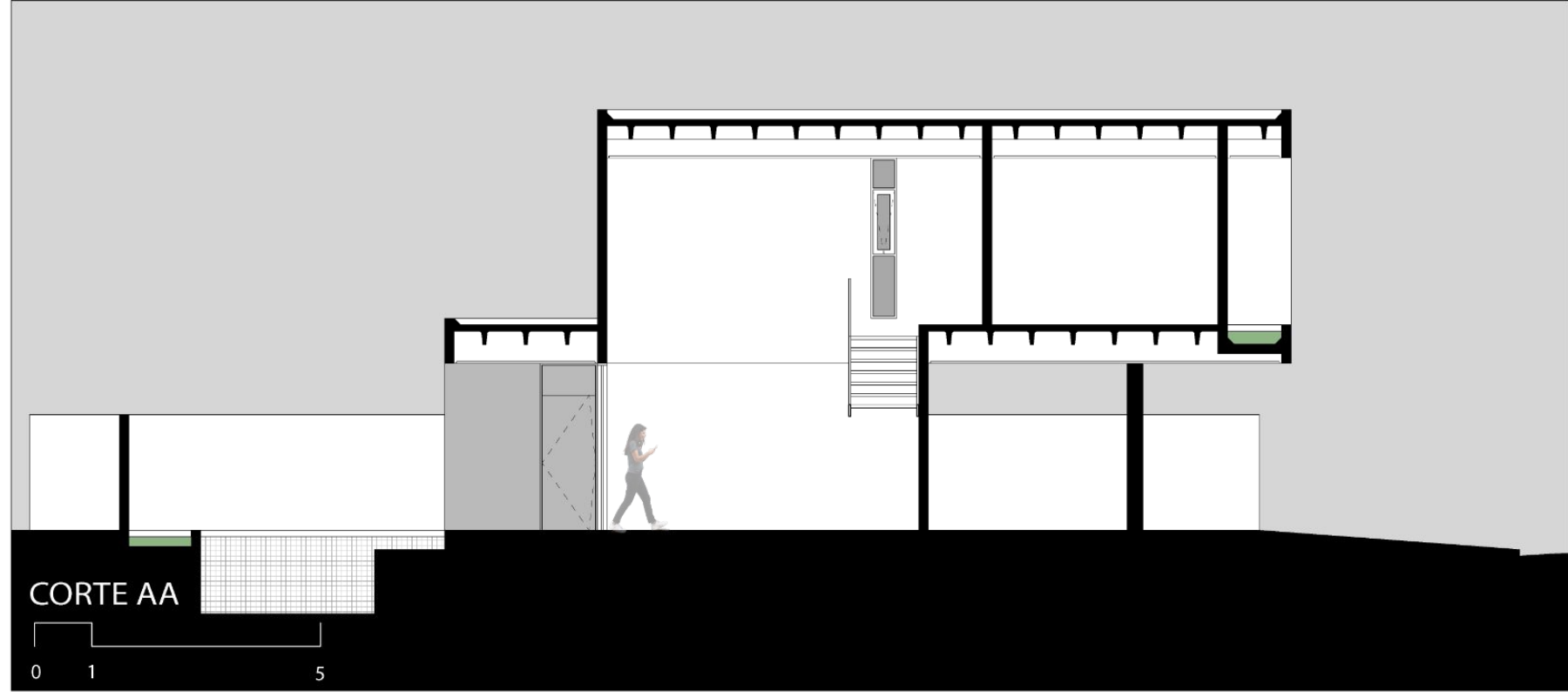
A

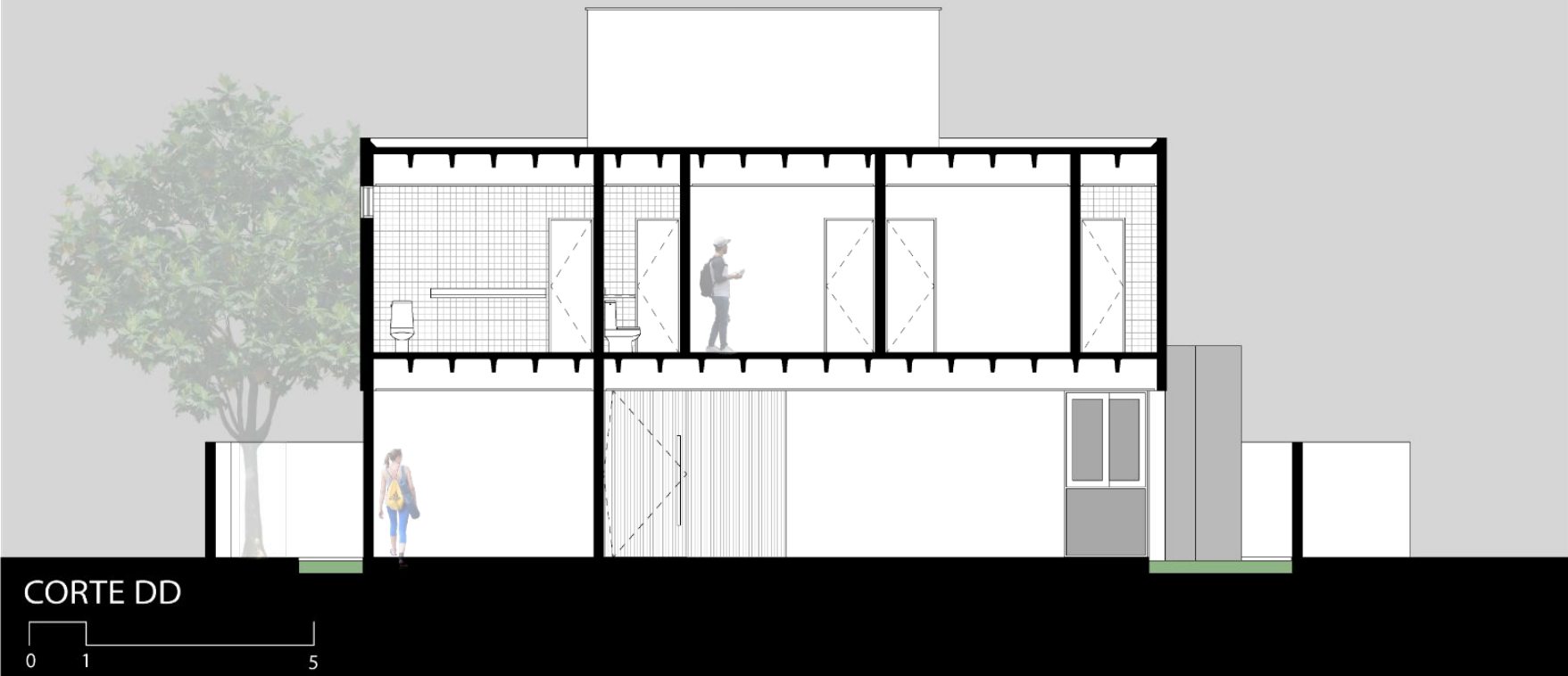
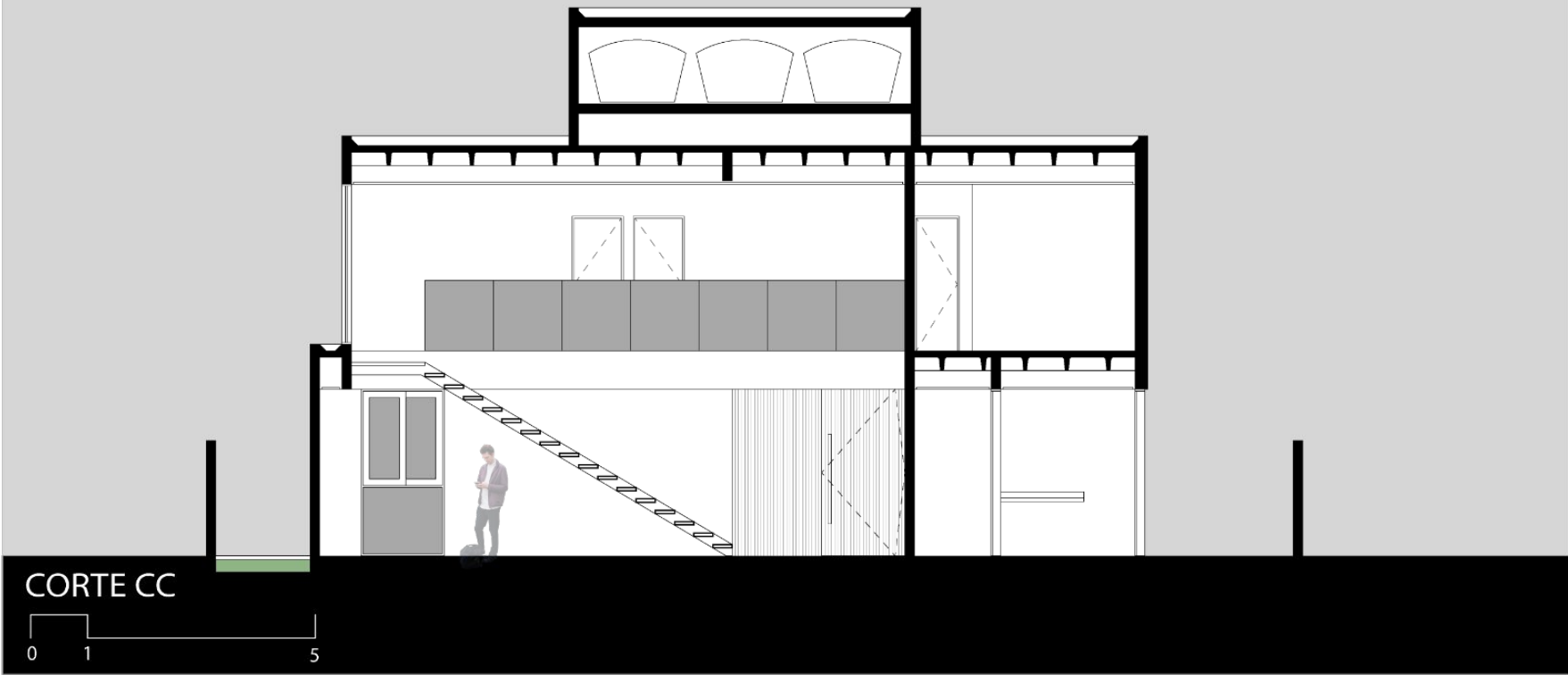
B

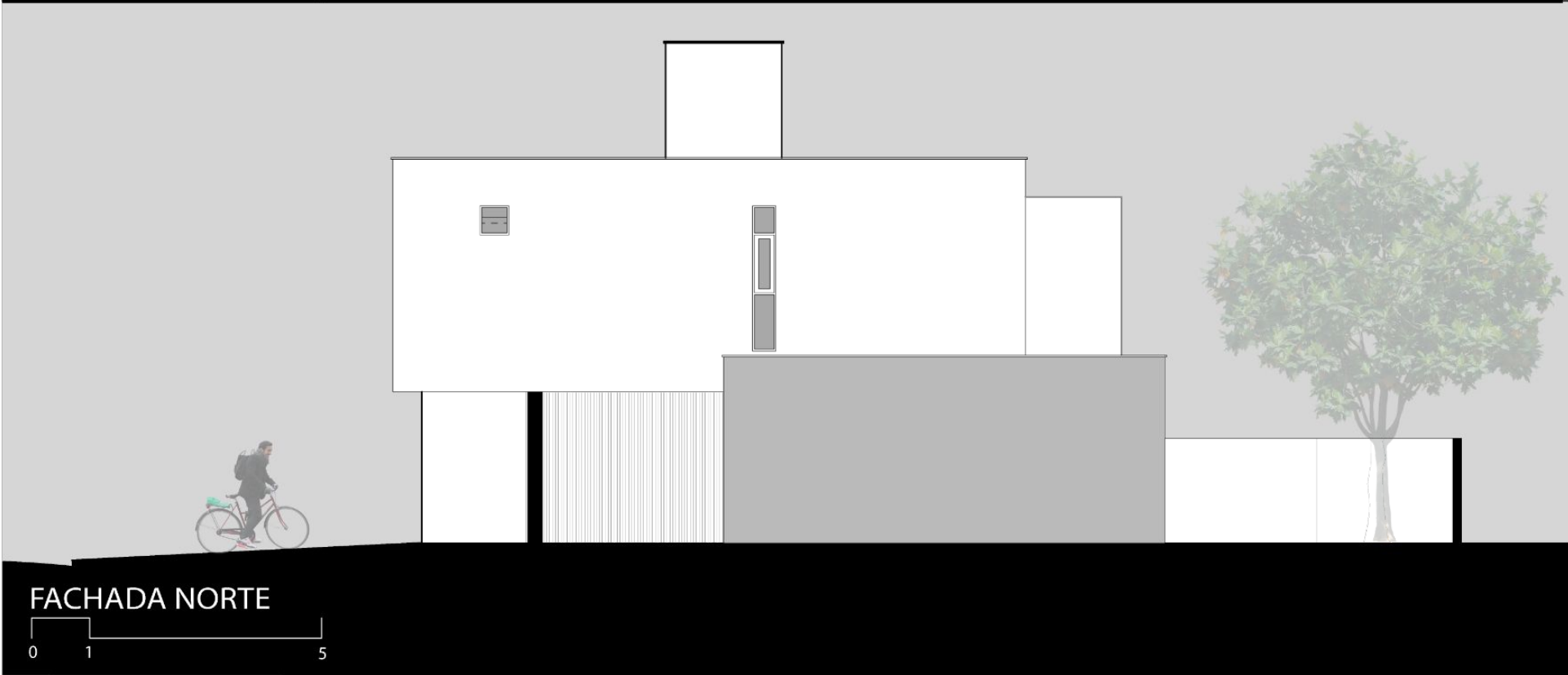
C

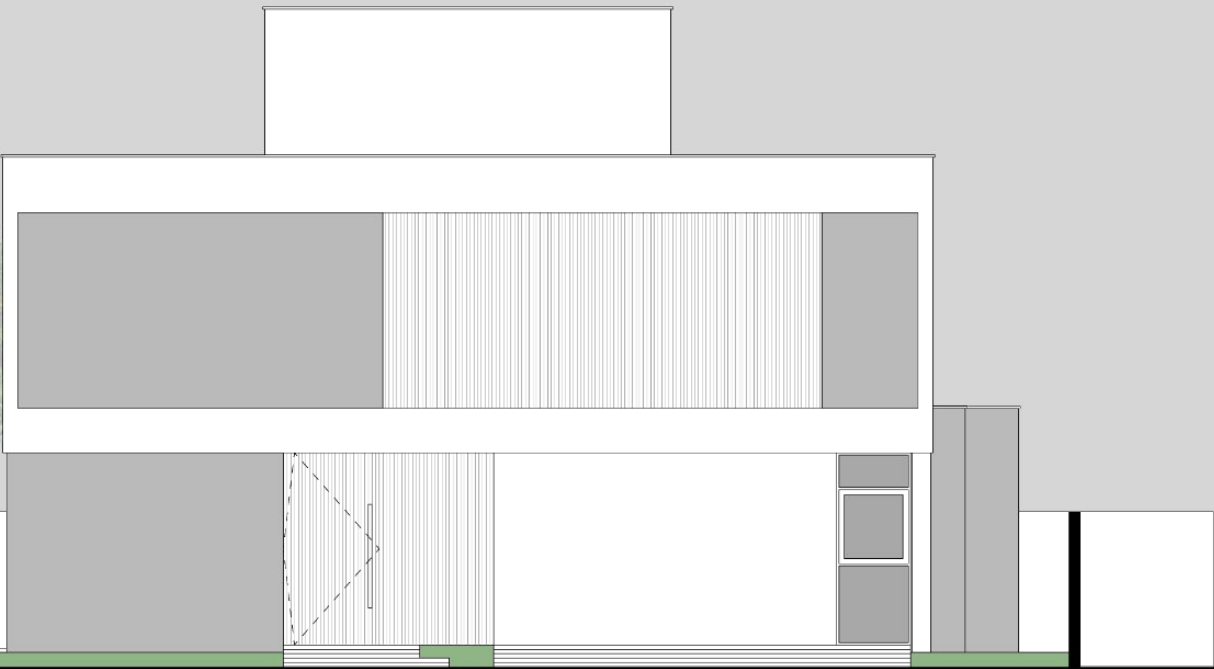
D



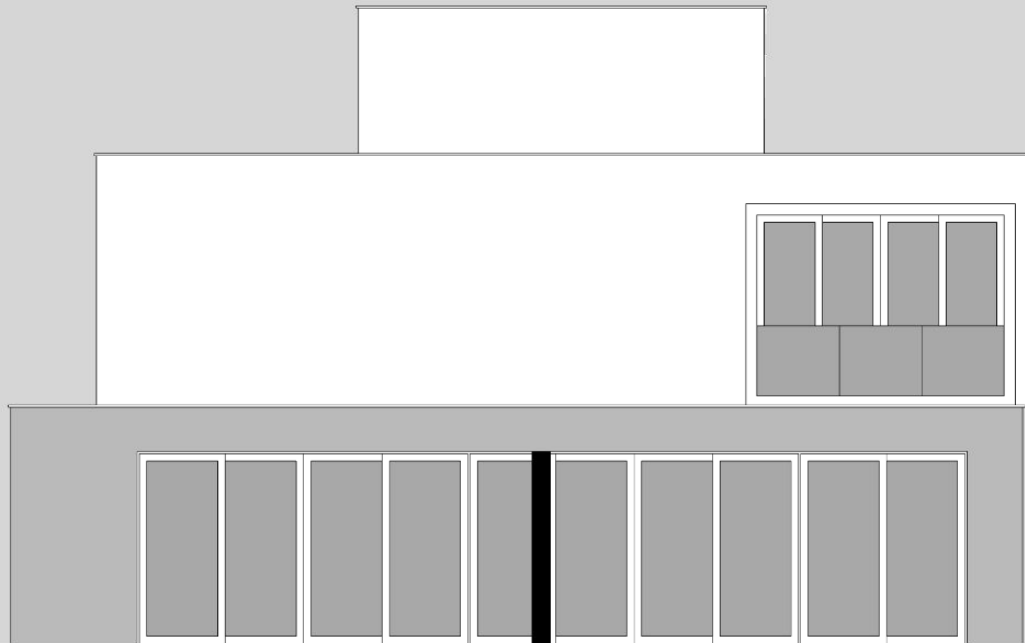








FACHADA LESTE



FACHADA OESTE







CASA RE

Projeto: Deivid Borges, Fabiano Melo, Louise Almeida, Raissa Borges

Colaboradores: Douglas Almeida, José Neto, Karla Barbosa, Maria Luíza Diniz,
Thalia Rodrigues, Victor Sousa

Ano projeto: 2023

Localização: Campina Grande, Paraíba, Brasil

Maquete Eletrônica: Render Expresss

WNI