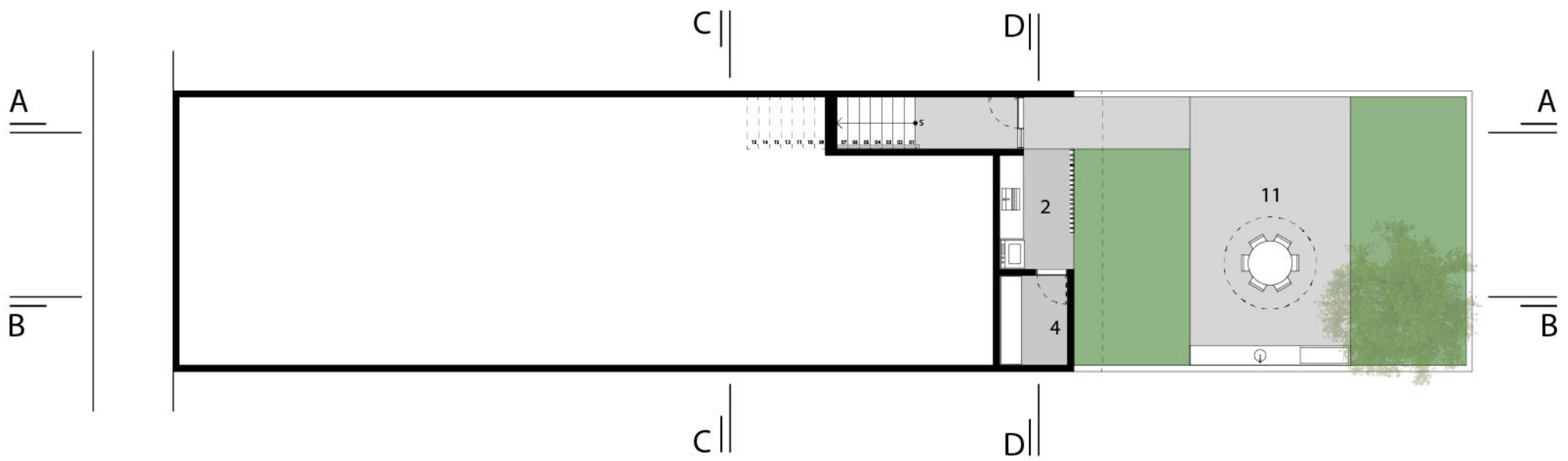


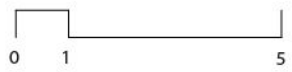
VILA NOVA

CASA I.S. (2023)
Campina Grande, Paraíba, Brasil

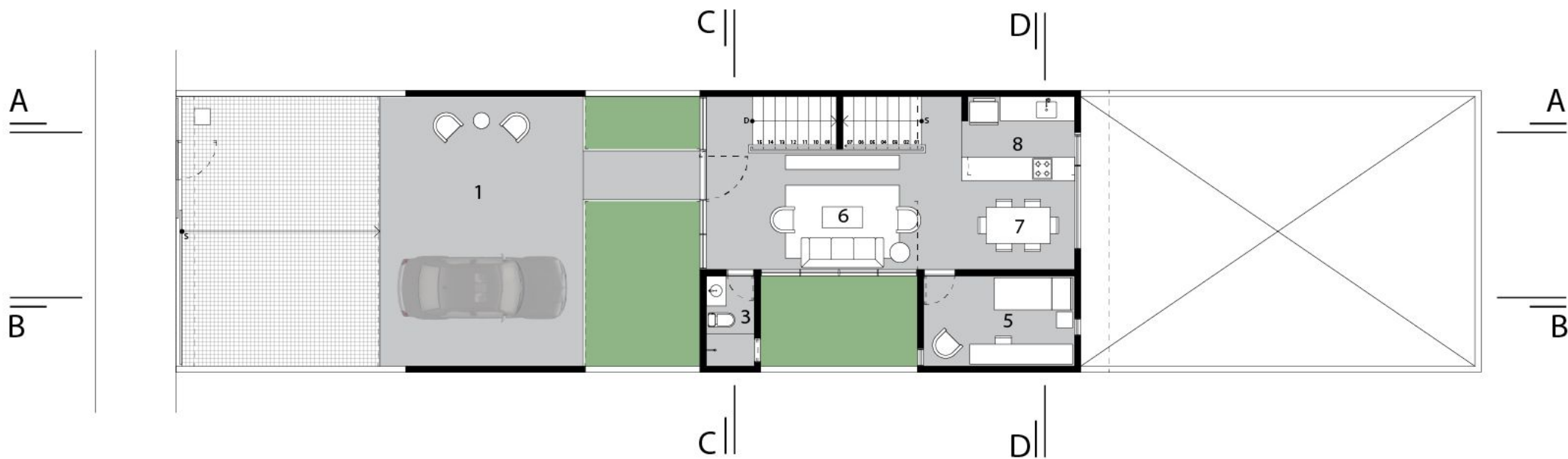




PLANTA BAIXA SUBSOLO



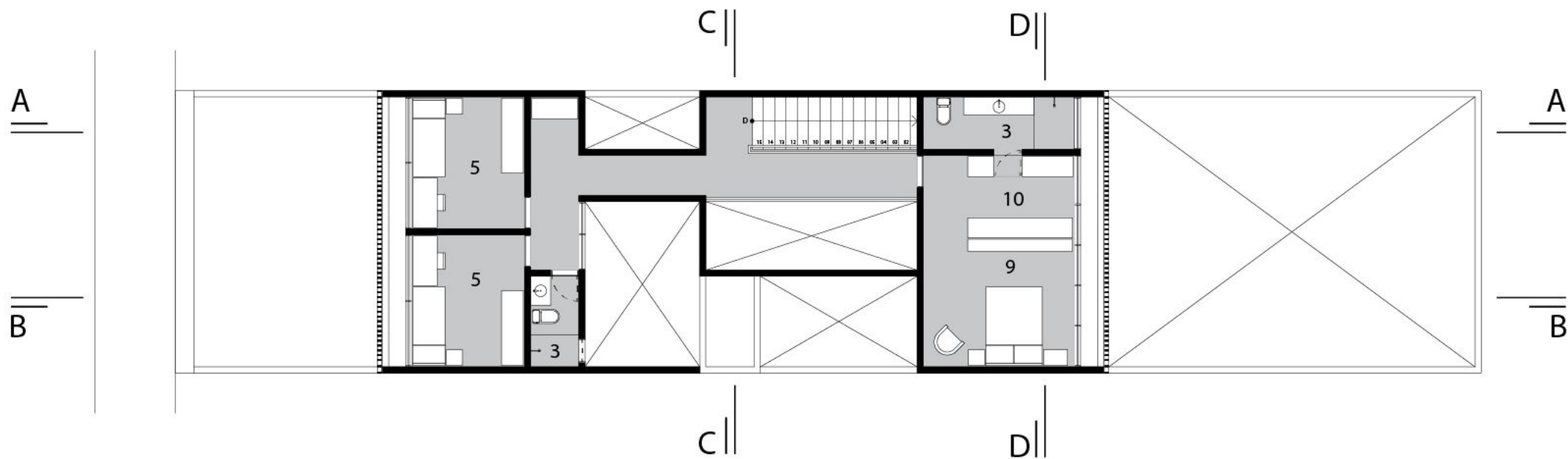
- | | | | |
|-------------|---------------|------------|-------------|
| 1. GARAGEM | 4. DEPÓSITO | 7. JANTAR | 10. CLOSET |
| 2. SERVIÇO | 5. DORMITÓRIO | 8. COZINHA | 11. QUINTAL |
| 3. BANHEIRO | 6. ESTAR | 9. SUÍTE | |



PLANTA BAIXA TÉRREO



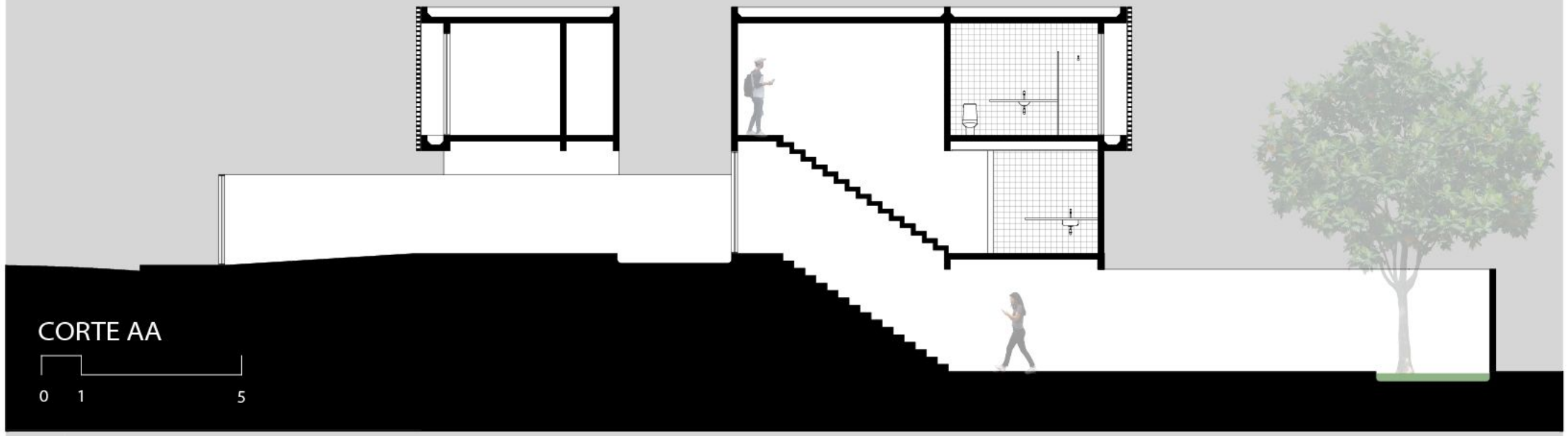
- | | | | |
|-------------|---------------|------------|-------------|
| 1. GARAGEM | 4. DEPÓSITO | 7. JANTAR | 10. CLOSET |
| 2. SERVIÇO | 5. DORMITÓRIO | 8. COZINHA | 11. QUINTAL |
| 3. BANHEIRO | 6. ESTAR | 9. SUÍTE | |



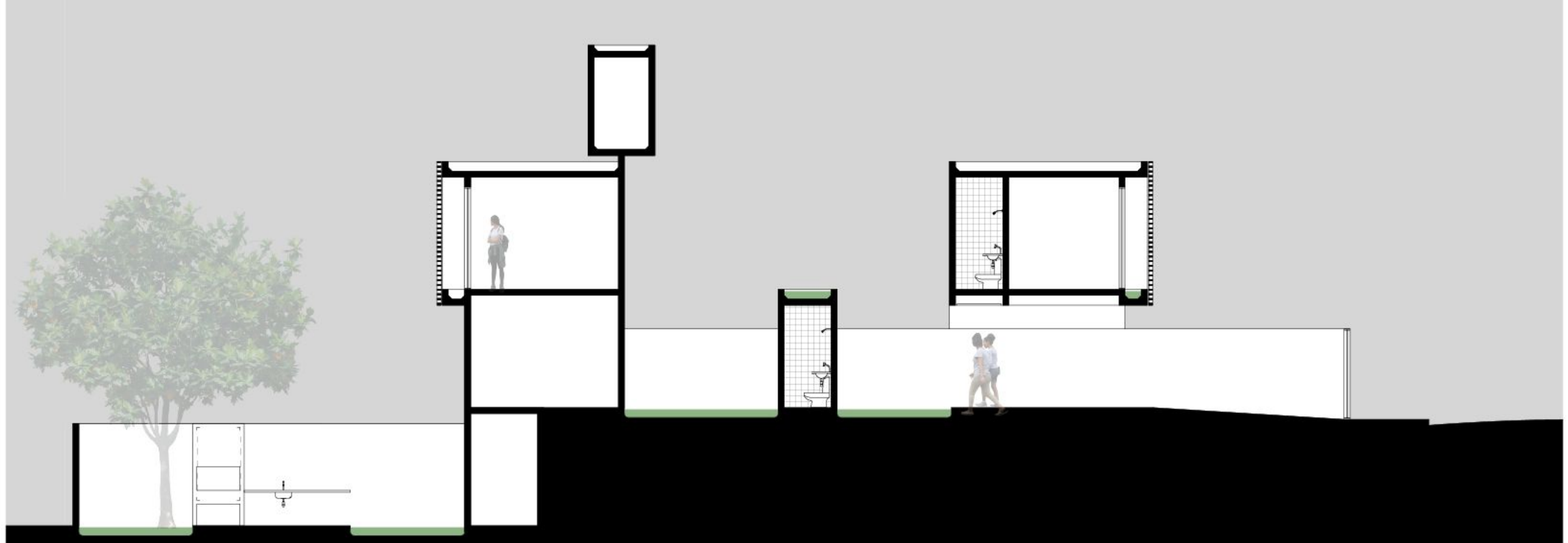
PLANTA BAIXA 1º PVTO



- | | | | |
|-------------|---------------|------------|-------------|
| 1. GARAGEM | 4. DEPÓSITO | 7. JANTAR | 10. CLOSET |
| 2. SERVIÇO | 5. DORMITÓRIO | 8. COZINHA | 11. QUINTAL |
| 3. BANHEIRO | 6. ESTAR | 9. SUÍTE | |

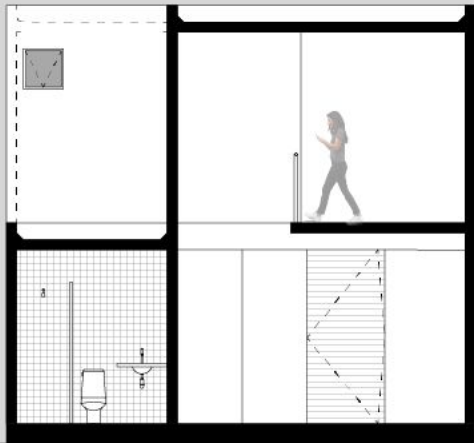


CORTE AA

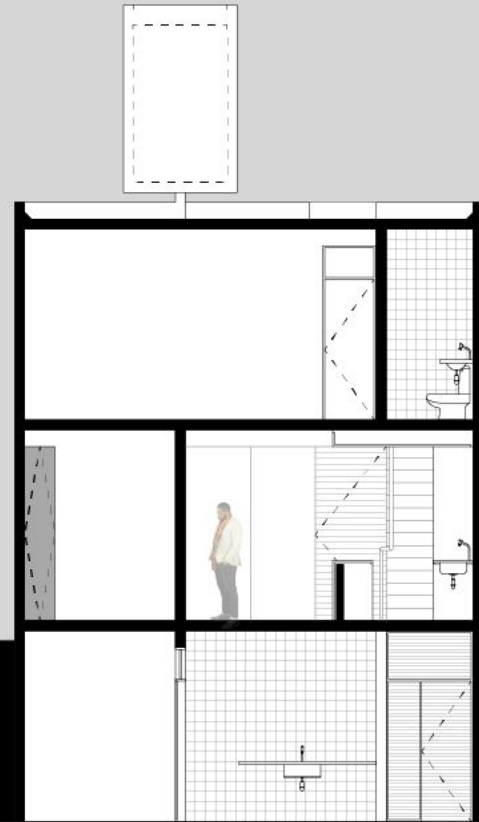


CORTE BB



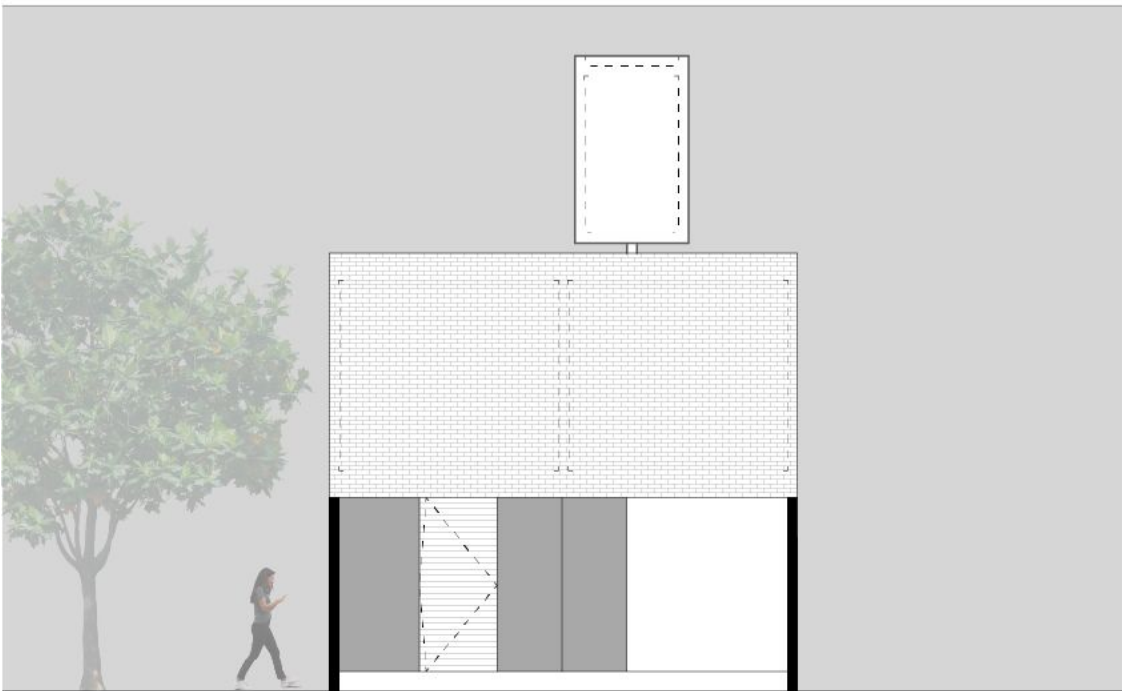


CORTE CC

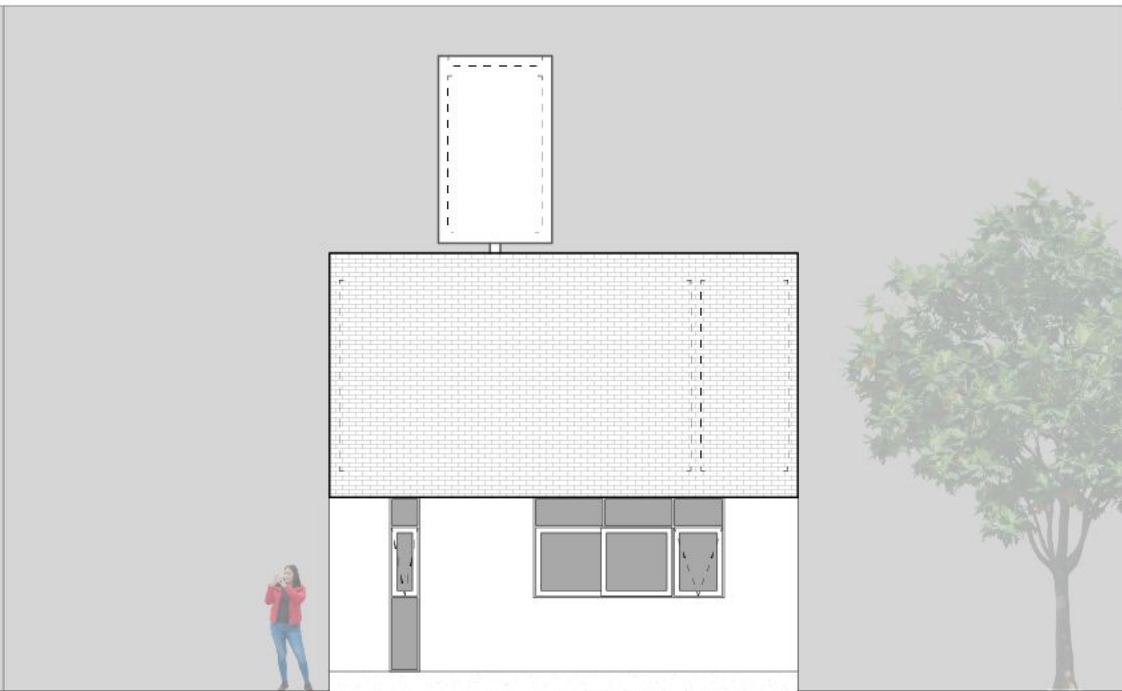


CORTE DD





FACHADA OESTE



FACHADA LESTE















CASA I.S.

Projeto: Fabiano Melo, Raissa Borges, Deivid Borges, Louise Almeida.

Colaboradores: Douglas Almeida, João Luiz

Ano projeto: 2023

Localização: Campina Grande, Paraíba, Brasil

WNI