

VILA NOVA

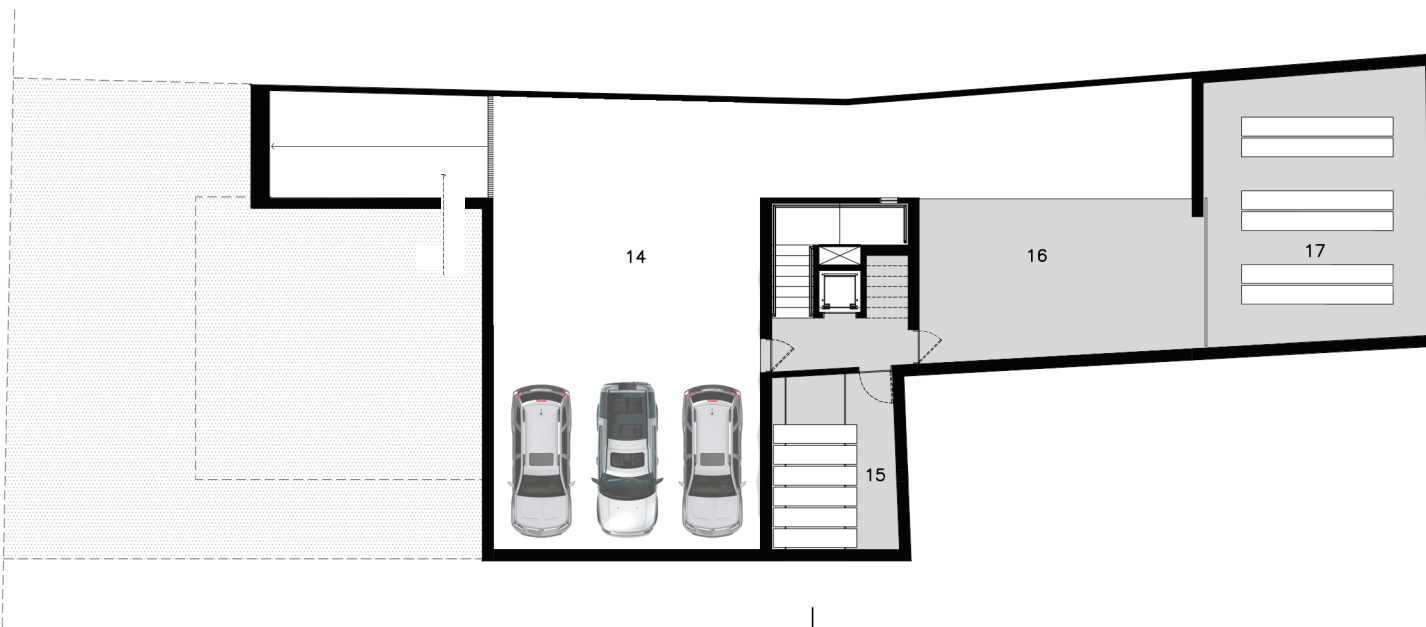
COMERCIAL AÇUDE VELHO (2013)

Campina Grande, Paraíba, Brasil

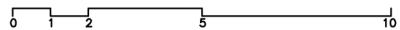


OUROVEL
INVESTIMENTOS

RUA PAULO DE FRONTIM



PLANTA BAIXA - SUBSOLO

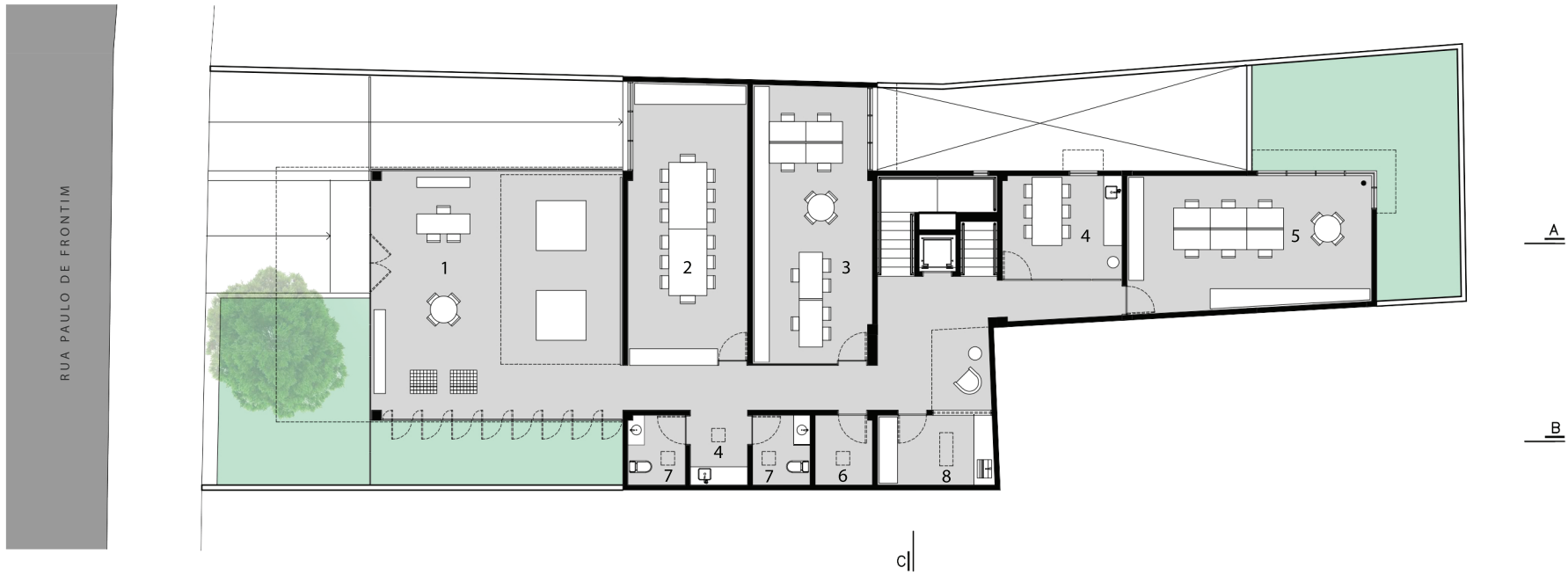


- 14. GARAGEM
- 15. ARQUIVO
- 16. APOIO
- 17. ALMOXARIFADO

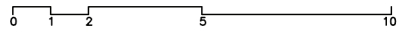
A

B

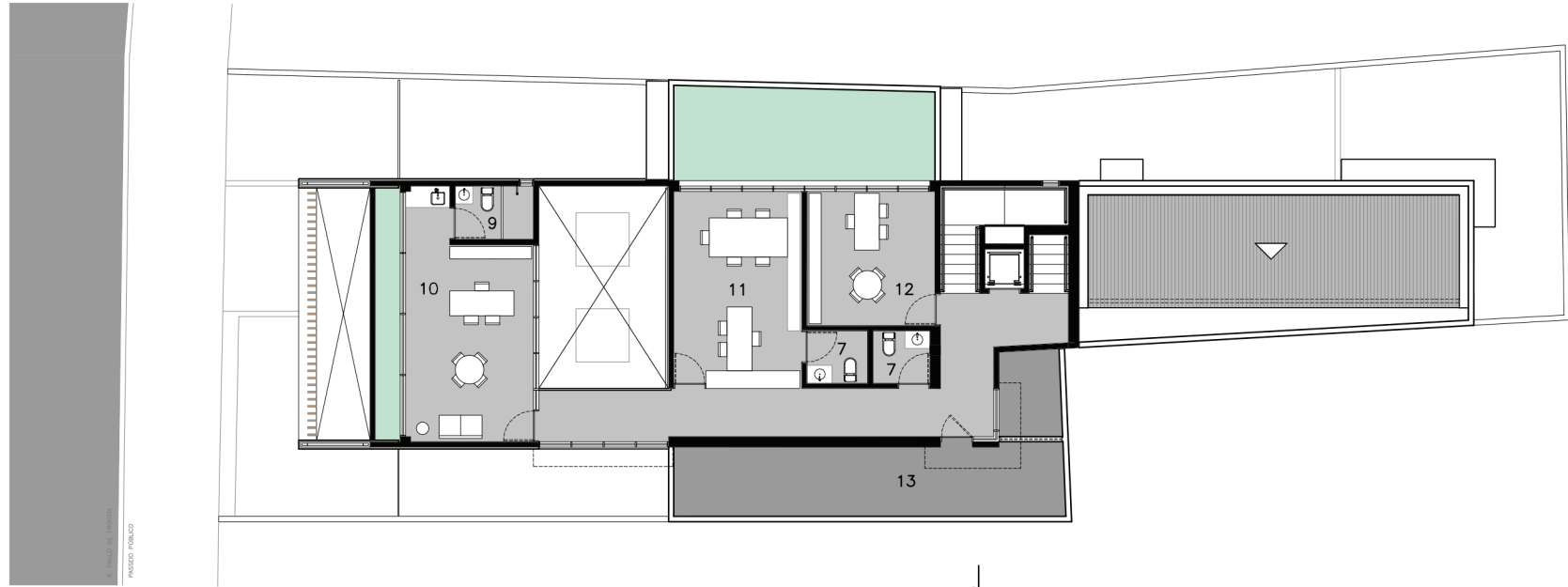
cl



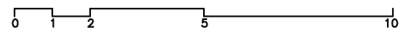
PLANTA BAIXA - TÉRREO



- | | | |
|------------------------------|--------------------|------------------|
| 1. RECEPÇÃO | 6. DEPÓSITO | 11. ENGENHARIA |
| 2. REUNIÃO | 7. WC | 12. FACTORY |
| 3. DEP. COMERCIAL/FINANCEIRO | 8. ÁREA DE SERVIÇO | 13. LAJE TÉCNICA |
| 4. COPA | 9. BWC | |
| 5. SETOR RH | 10. DIRETORIA | |



PLANTA BAIXA - 1º PAV.



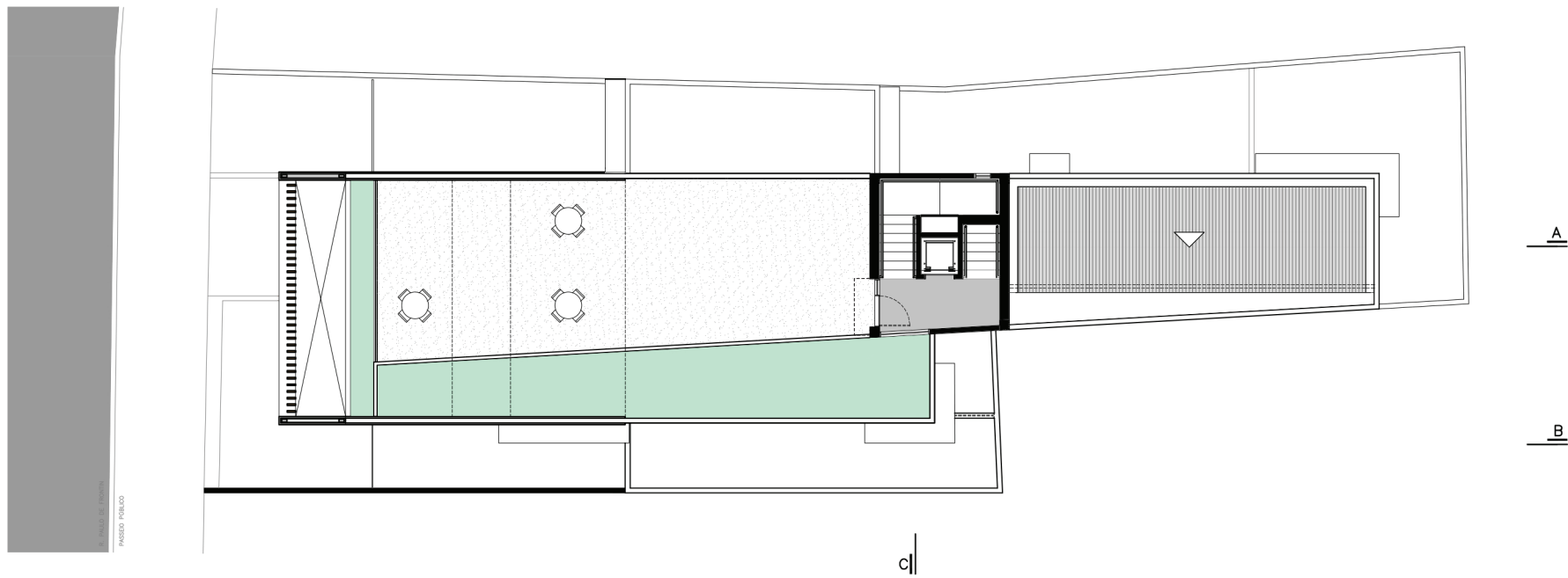
- | | | |
|------------------------------|--------------------|------------------|
| 1. RECEPÇÃO | 6. DEPÓSITO | 11. ENGENHARIA |
| 2. REUNIÃO | 7. WC | 12. FACTORY |
| 3. DEP. COMERCIAL/FINANCEIRO | 8. ÁREA DE SERVIÇO | 13. LAJE TÉCNICA |
| 4. COPA | 9. BWC | |
| 5. SETOR RH | 10. DIRETORIA | |

c|

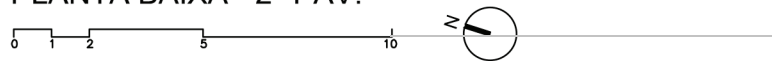
A

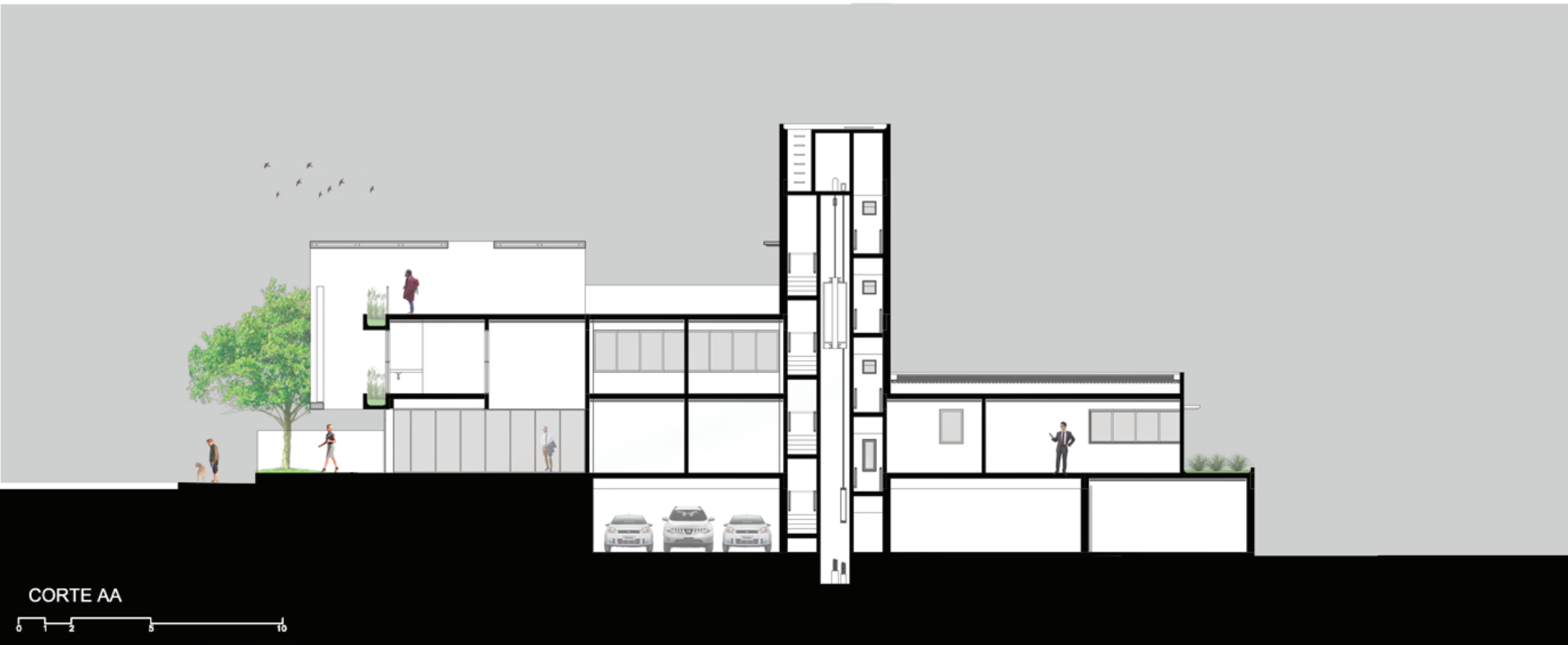
B

PROJETO PÚBLICO



PLANTA BAIXA - 2º PAV.

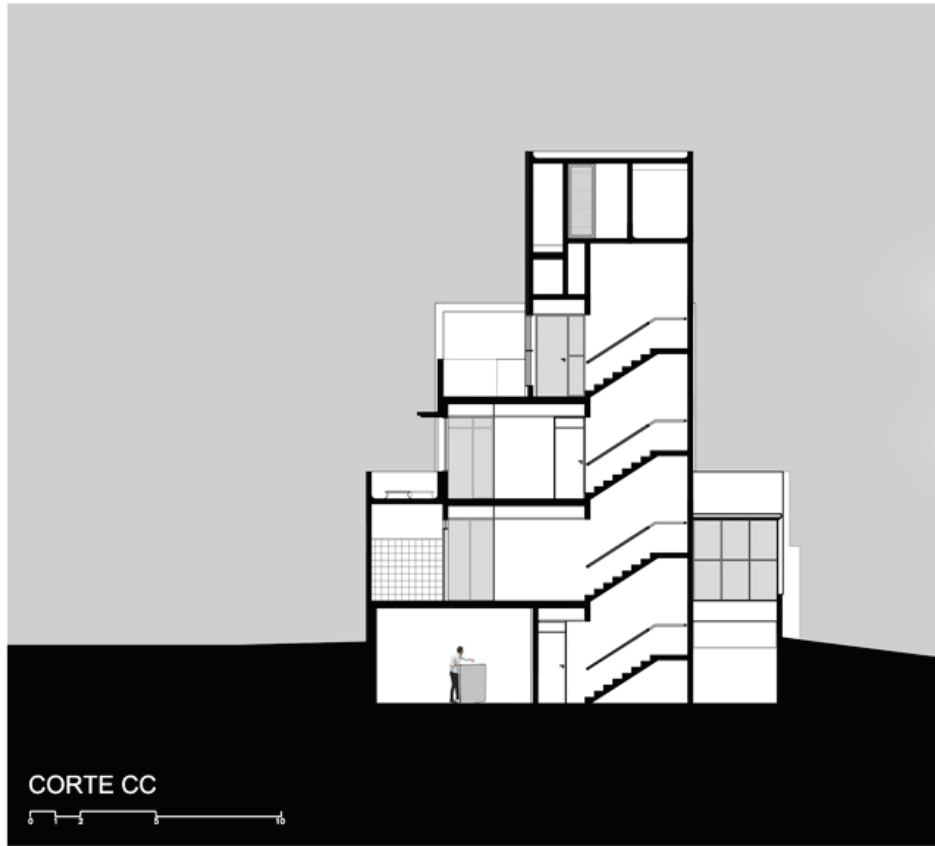




CORTE AA

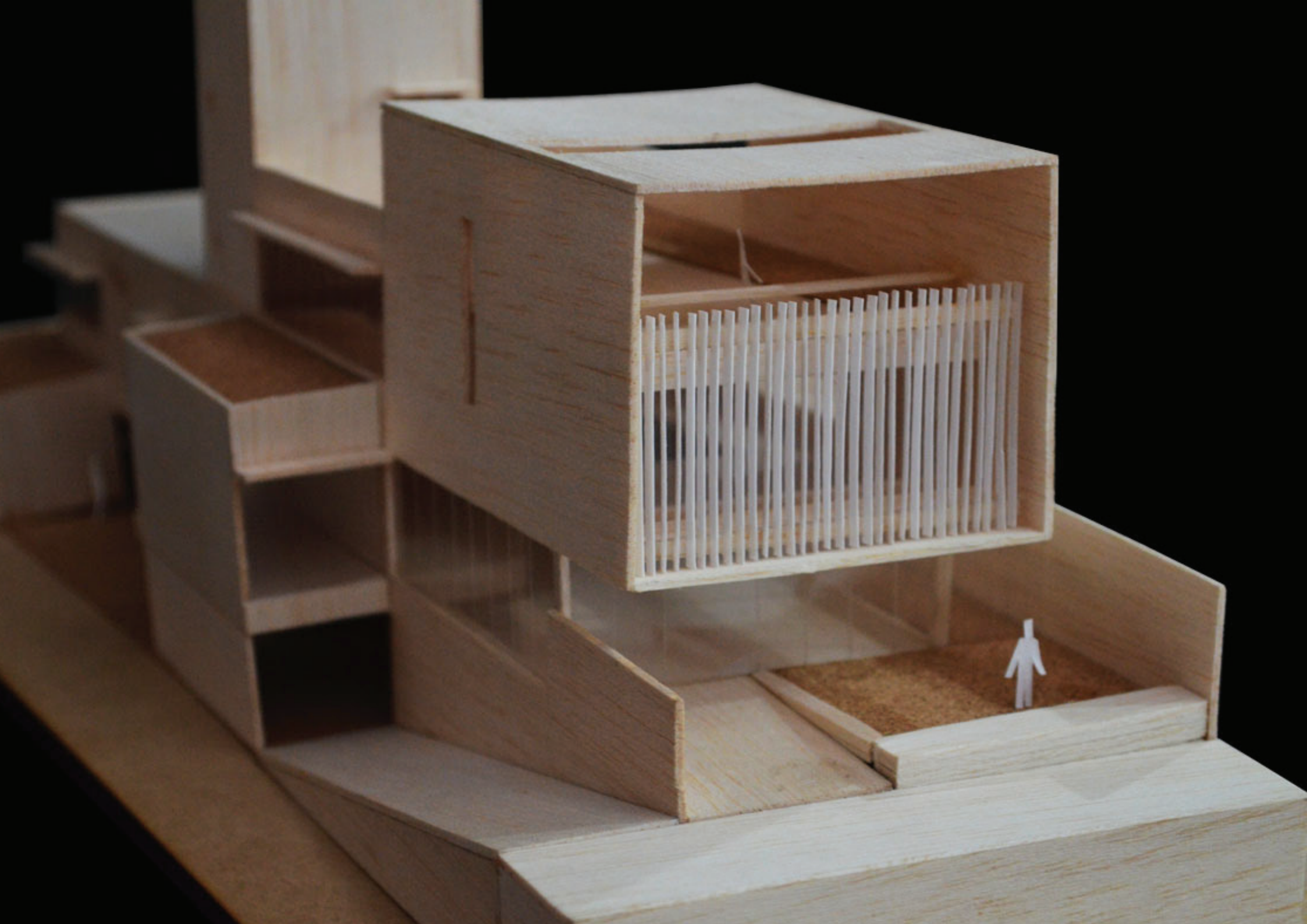


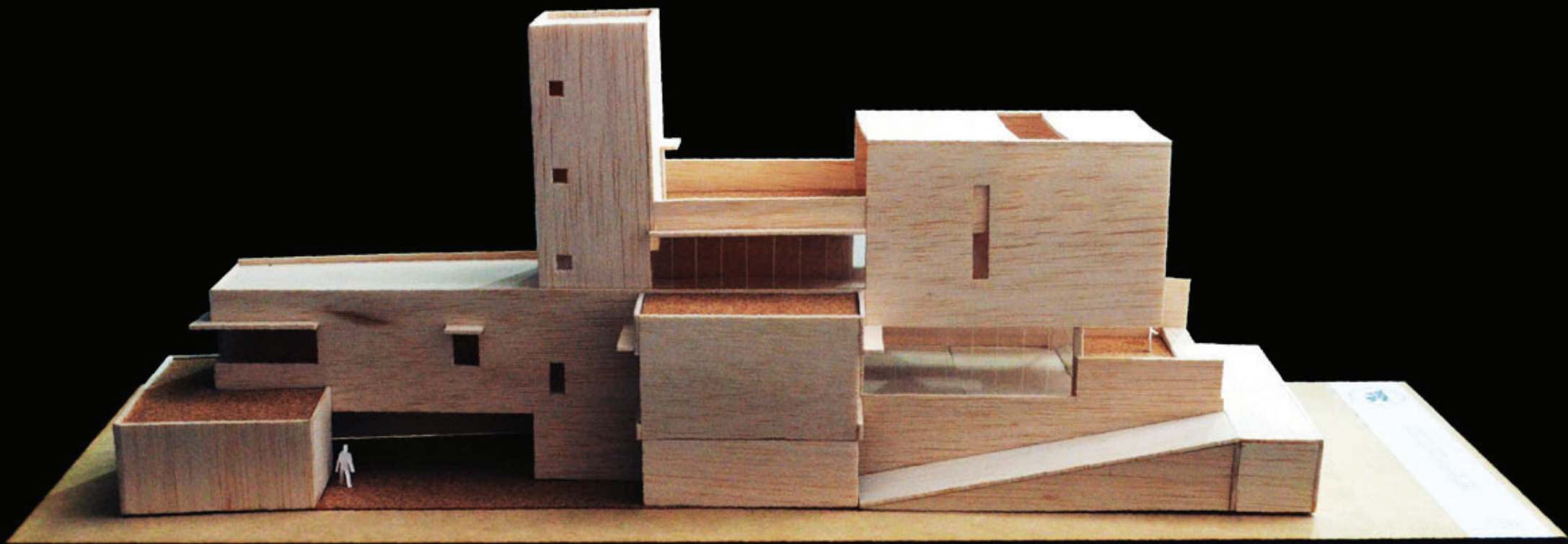


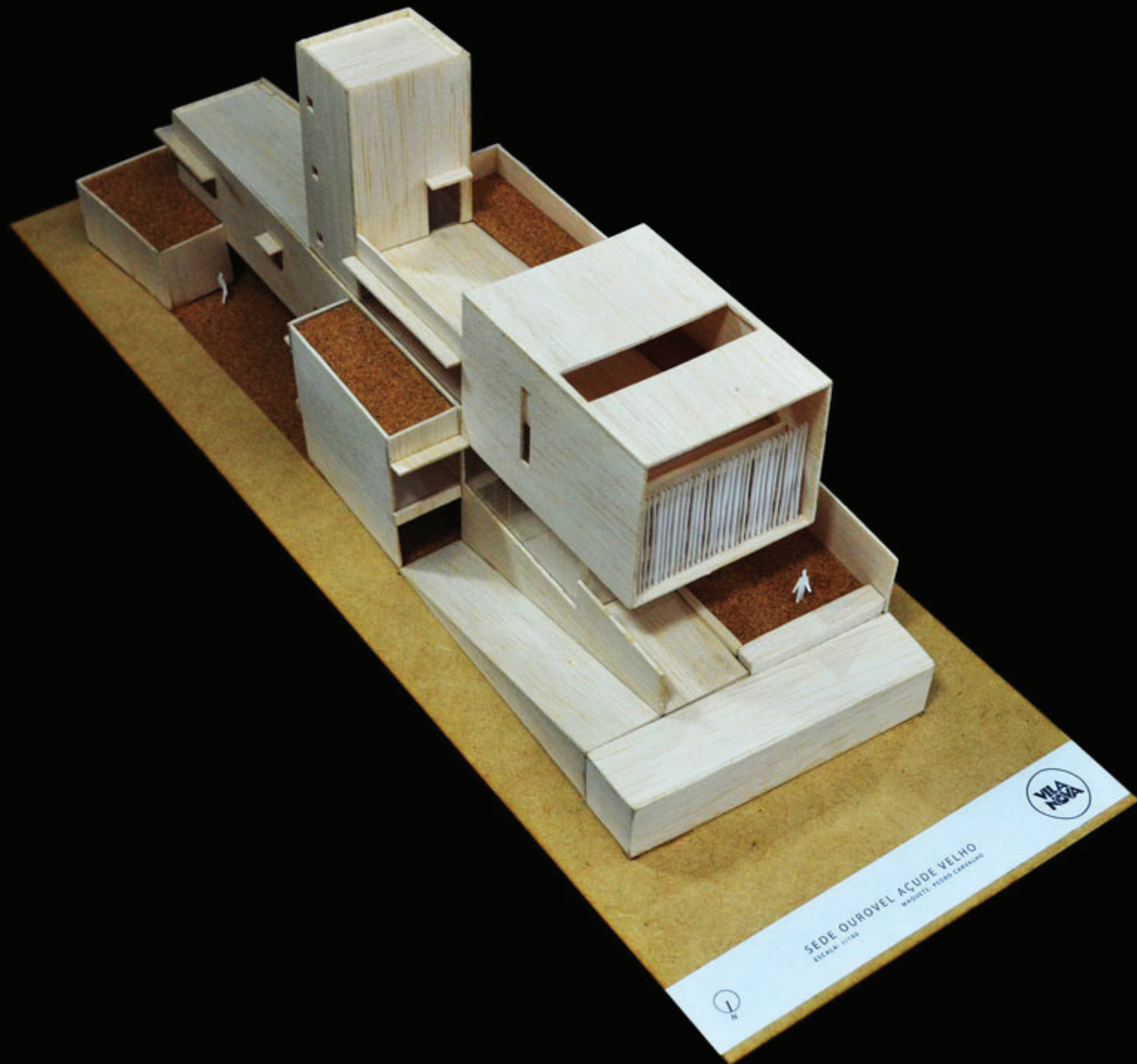












SEDE OUROVEL ACUDE VELHO
ESCALA: 1:100
ARQUITETO: PEDRO CARVALHO





EMPRESARIAL AÇUDE VELHO

FICHA TÉCNICA:

Projeto: **Vila Nova** | Fabiano Melo, Glaynes Cardoso, Marcus Vinicius

Colaboradores: Pedro Henrique Carvalho, Pedro Henrique Costa

Ano projeto: 2013

Localização: Campina Grande, Paraíba, Brasil